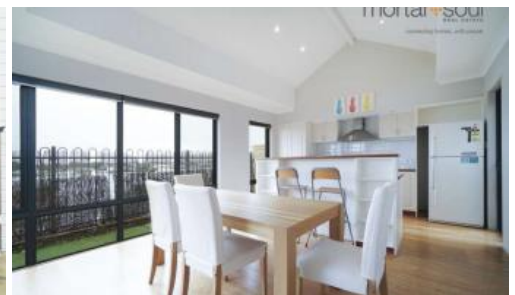


Leased

mortar+soul
REAL ESTATE
connecting homes...with people

4, 15 Parkfield Street, Bunbury



Secure Modern Hilltop Haven!

Stunningly situated within Bunbury's prestigious and securely-gated "Bury Hill" complex where breathtaking elevated views over the town's city centre are simply an added bonus to quality low-maintenance living, this impeccably-presented 3 bedroom 2 bathroom townhouse-style strata residence represents a unique rental opportunity so close to everyday amenities and adjacent to the iconic St Patrick's Cathedral.

There are two lower-level living spaces for you to take full advantage of – a welcoming front lounge room and a separate open-plan family, dining and kitchen area with seamless outdoor access to the semi-covered entertaining courtyard, as well as double sinks, sleek tiled splashbacks and contemporary stainless-steel range hood, gas cook-top and oven appliances. Upstairs, a carpeted master-bedroom suite is the pick of the sleeping quarters with its split-system air-conditioning unit, a sliding door leading out to a private balcony (with an awesome vista) and a personal ensuite bathroom, complete with a shower and toilet.

What a place to be a proud tenant, just a short stroll from the main café strip, night spots, schools, shopping, award-winning restaurants, public transport, parks and only a few minutes away from the coast. Opportunity knocks for you here – and loudly!

Other features include, but are not limited to:

3 3 4

Price	\$550 per Week
Property Type	Rental
Property ID	132

Agent Details

Hadley Shearn - 0488 012 000

Office Details

Mortar & Soul
45 Ventnor Ave West Perth WA
6005 Australia
08 9429 8808

mortar+soul
REAL ESTATE

- Quality Bamboo flooring
- Split-system air-conditioning to main living area + bedrooms also
- Vaulted cathedral-style ceiling to kitchen area
- 2nd/3rd bedrooms are also carpeted for comfort
- Bathtub with shower head to a practical main bathroom
- Functional laundry with a powder room, double linen press and outdoor access
- Feature down lighting
- Secure lock-up garage parking for three vehicles

Please email us for an application form as WE DON'T accept 1 FORM applications

The above information provided has been furnished to us by the vendor/s. We have not verified whether or not that information is accurate and do not have any belief in one way or the other in its accuracy. We do not accept any responsibility to any person for its accuracy and do no more than pass it on. All interested parties should make and rely upon their own inquiries in order to determine whether or not this information is in fact accurate.